

**December**

**2024**

**WIXOM LAKE**  
**BOTTOMLANDS ACTIVITY SUMMARY**

PREPARED FOR:  
WIXOM LAKE IMPROVEMENT BOARD  
GLADWIN COUNTY, MI

**WIXOM LAKE IMPROVEMENT BOARD**

Joe Sova, Chair  
Midland County Drain Commissioner

Terry Walters, Treasurer  
Gladwin County Drain Commissioner

Ray Drumwright, Secretary  
Edenville Township

Jeanette Snyder  
Midland County Board of Commissioners

Larry Woodard  
Riparian

Carol Ayers  
Billings Township

Don Zackett  
Tobacco Township, 4-Lakes Taskforce  
Liasion

Tami O'Donnell  
Gladwin County Board of Commissioners

Robert Kelly  
Hope Township



**ENVIRONMENTAL CONSULTANT**

Progressive Companies

**AQUATIC HERBICIDE APPLICATOR**

PLM Lake & Land Management Corp.

**MOWING CONTRACTOR**

Wixom Lake Association

A reliable resource for  
information on Michigan's  
inland lakes.



**michiganlakeinfo**  
michiganlakeinfo.com



# PROGRAM SUMMARY

In May of 2020, the Edenville Dam failed resulting in the rapid exposure of Wixom Lake’s bottomlands. The exposed, fertile bottomlands provided ideal substrate for cottonwood and willow seed germination. These woody species have taken over the bottomlands and impose complications and safety concerns for the refill of Wixom Lake. The Wixom Lake improvement Board with coordination from their environmental consultant, Progressive Companies, and the 4-Lakes Task Force developed a plan to address the fast growing, terrestrial plant species. The project involves the use of select herbicides and mowing to clear out the bottomlands of woody growth prior to the lakes estimated refill in 2027. If unaddressed, these woody species have the potential to impose navigational hazards on the lake once refilled.

The project is financed by the Wixom Lake Improvement Board under Part 309 of the Environmental Protection Act, donations, and the Wixom Lake Association. Coordination of bottomland activities is under the direction of the environmental consultant, Progressive Companies, utilizing georeferenced drone photography to delineate areas of woody growth. These areas were then digitized in a deliverable map with corresponding GPS locations to the herbicide and mowing contractors.

Herbicide applications were permitted by the Michigan Department of Environment, Great Lakes, and Energy (EGLE). 2024 treatments involved ground applications using glyphosate for emergent vegetation, primarily invasive *Phragmites*.

The Wixom Lake Improvement Board (WLIB) and the Wixom Lake Association (WLA) entered into a one-year contract in July of 2024 to conduct mowing on the jurisdictional bottomlands under the authority of the WLIB. Under this contract, a total of 410.2 acres of nuisance woody vegetated areas were mowed during August, September, and October.

Treatment and mowing areas addressed in 2024 are shown in the following maps broken up by the utilization type and show the extent of work done in 2024 (pages 3 and 4).



*Phragmites australis*



Thomas Shores canal after mowing

# BOTTOMLANDS VEGETATION CONTROL

**TABLE 1. WIXOM LAKE 2024 BOTTOMLAND HERBICIDE TREATMENTS**

Date	Description	Acreage
April 12	EGLLE permit fee for 2024	NA
September 13	Posting and treatment notice	NA
September 13	<i>Phragmites</i> treatments	10.0
September 23	<i>Phragmites</i> treatments	11.3
September 30	<i>Phragmites</i> treatments	13.9
October 3	<i>Phragmites</i> treatments	1.6
Total		<b>36.8</b>

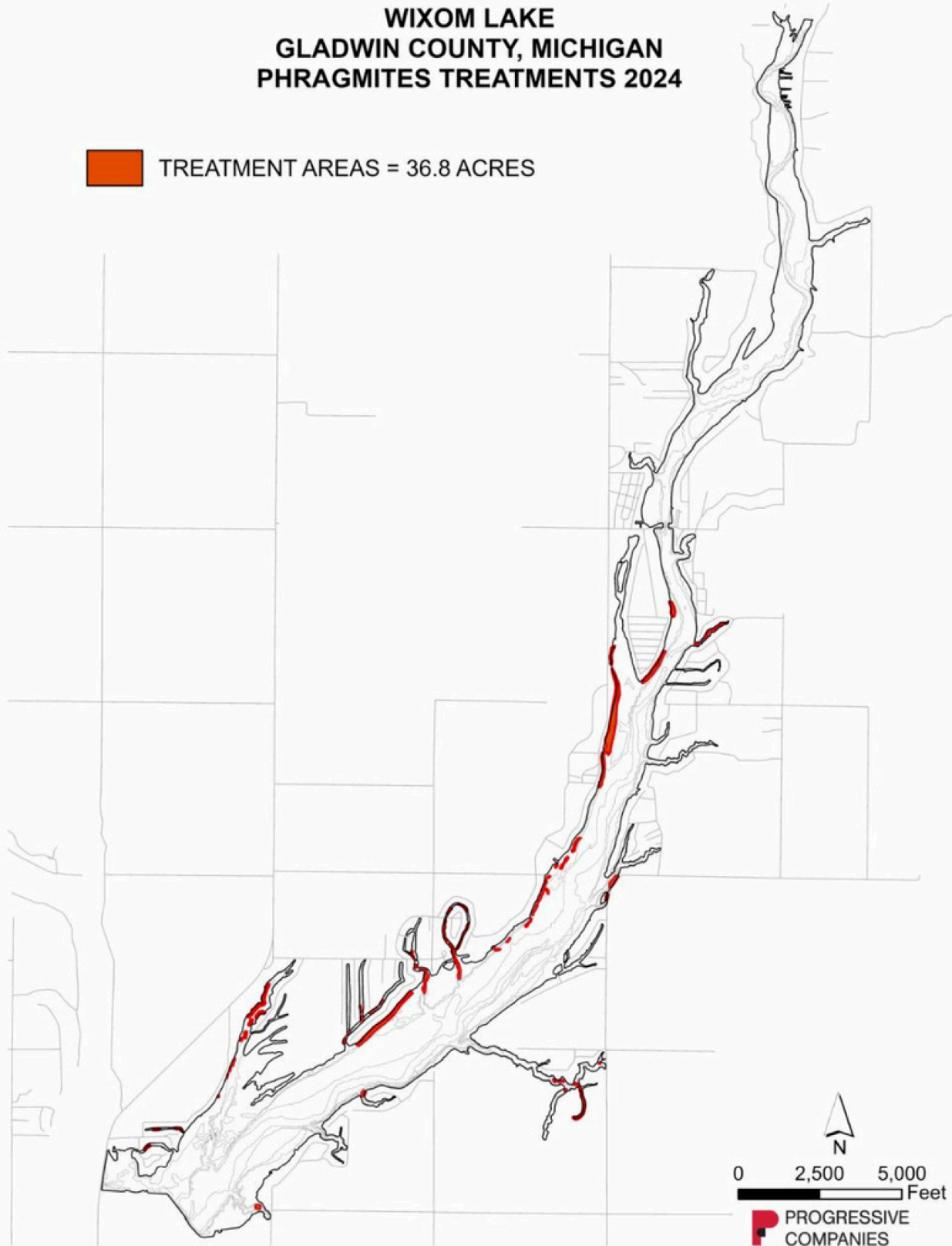
**TABLE 2. WIXOM LAKE 2024 BOTTOMLAND MOWING CONDUCTED BY WLA**

Date	Description	Acreage
August 8 - 16	Mowing north of Estey Road – west side	102.0
August 17 - 19	Mowing north of Estey Road – west side	15.0
August 19 - 21	Mowing north of Estey Road – west side	25.0
August 21	Mowing north of Estey Road – east side	10.0
August 22 - 24	Mowing north of Estey Road – east side	63.0
August 25	Mowing north of Estey Road – west side	10.0
August 26	Mowing north of Estey Road – east side	4.0
August 27 - 29	Mowing north of Estey Road – east side	21.0
August 29 - 30	Mowing north of Estey Road – east side	9.0
September 5	Mowing south of Estey Road – east side	3.8
September 5 - 6	Mowing south of Estey Road – east side	12.5
September 9	Mowing south of Estey Road – west side	14.5
September 9	Mowing south of Estey Road – west side	3.8
September 10	Mowing south of Estey Road – east side	4.0
September 10 - 12	Mowing south of Estey Road – east side	15.3
September 12	Mowing of Muddy Bay	13.0
September 13 - 18	Mowing south of Estey Road – east side of island	18.3
October 18 - 21	Mowing of Thomas Shores – east side	51.0
October 21 - 24	Mowing of Thomas Shores – east side	9.0
October 25 - 28	Mowing of Thomas Shores – east side	6.0
Total		<b>410.2</b>

In 2024, a total of 36.8 acres of Wixom Lake were treated with aquatic herbicides. Treatment areas consisted primarily of *Phragmites*, which were treated with glyphosate. Approximately 410.2 acres of mowing was performed on the Wixom Lake bottomlands. Mowing was funded by the Wixom Lake Improvement Board and performed under contract with the Wixom Lake Association.

**WIXOM LAKE  
GLADWIN COUNTY, MICHIGAN  
PHRAGMITES TREATMENTS 2024**

 TREATMENT AREAS = 36.8 ACRES



**WIXOM LAKE  
GLADWIN COUNTY, MICHIGAN  
MOWING 2024**

 MOWING AREAS = 410.2 ACRES

